

Beautifully Placed Confidence™

As a family-owned business, Eagle Bay operates on a unique set of values. Trust means everything to us, and we earn it by offering the finest products and services. We understand that we're not just making hardscape products, we're creating peace of mind.



EAGLE BAY HARDSCAPE PRODUCTS | 1231 WILLIS ROAD, RICHMOND, VIRGINIA 23237 | TOLL FREE 800.321.9141
www.EagleBayPavers.com   

© Eagle Bay USA.

Polymeric Sand

FOR EAGLE BAY PAVERS

FEATURES AND BENEFITS

- STABILIZES PAVERS AND STRENGTHENS INTERLOCKING
- EASILY APPLIED DRY, HARDENS AFTER BEING SHOWERED
- WATER RESISTANT AFTER 90 MINUTES
- INHIBITS WEED GROWTH
- DETERS INSECT INFESTATION
- RESISTS EROSION



Polymeric Sand

FOR EAGLE BAY PAVERS



- Minimum joint width: 1/8"
- Maximum joint width: 1" (a larger joint width is acceptable where the pavers intersect)
- Minimum joint depth: 1.5"

TECHNISEAL RG+

Issued from the latest generation of polymers, TECHNISEAL® RG+ becomes water resistant quickly after activation. Designed to make joint stabilization easier than ever, RG+ polymeric jointing sand is a high-tech mix of graded sand (ASTM C-144) and binder, specially formulated for the filling of narrow or wide joints when installing pavers or when replacing existing joints.

Easy to use, RG+ is applied dry; it starts to set a few minutes after wetting, quickly becoming resistant to water erosion (rain, splashes, sprinklers, etc.). Once dry and polymerized, TECHNISEAL® RG+ polymeric sand also resists insect invasion and inhibits weed growth. Because it remains flexible, it follows the movements of pavers or slabs.

RG+ APPLICATION

- Light vehicular traffic areas such as small commercial parking lots, driveways, etc.
- Normal to heavy pedestrian areas such as parks, walkways, terraces, patios, etc.
- Areas with normal rainwater exposure



- Minimum joint width: 1/8"
- Maximum joint width: 4"
- Minimum joint depth: 1.5"

TECHNISEAL HP2

TECHNISEAL® HP2 POLYMERIC SAND is a state-of-the-art mix of graded sand (ASTM-C144) and binder that flows smoothly down joints for a fast and effective installation of pavers with wide and false joints.

It is also recommended for surfaces exposed to heavy traffic and for high-humidity areas. HP2 POLYMERIC SAND starts to set only a few minutes after being activated with water and quickly becomes resistant to water erosion (rain, splashes, sprinklers, etc.). TECHNISEAL® HP2 POLYMERIC SAND offers great resistance to weed growth, insect invasion, and erosion.

HP2 APPLICATION

- For heavy-traffic and high-humidity areas, steep slopes and false or wide joints.

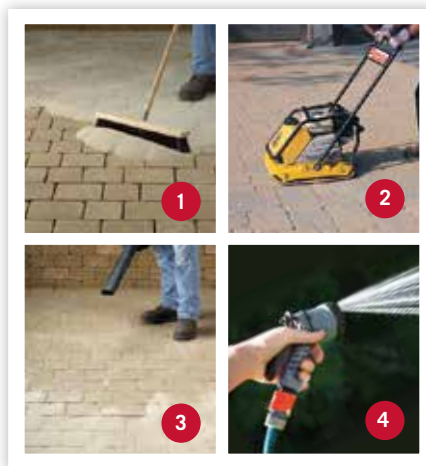
INSTALLATION INSTRUCTIONS

1. Pour and spread sand uniformly over the dry surface. Using a push broom, sweep the product so as to fill the joints completely, down to their full depth.
 2. Pass a plate vibrator over the entire surface to fully firm up the joints. This step is essential to obtain solid, durable joints.
- Repeat steps 1 & 2 until joints are completely packed. Joints must be filled up to the bottom of the pavers chamfer, or at least up to 1/8" below the top of the pavers.*
3. Sweep the surface with a fine bristle brush and remove all residue with a leaf blower.
 4. Wet 200 sq. ft. of surface at a time by setting your spray nozzle to "shower". Wet for 30 seconds at a time. Ensure that the wetting of one section is finished before another section is started. Wetting of the entire project should be done without interruptions.

As soon as wetting is completed on a section, use a leaf blower to quickly blow the excess water off the surface. This will remove any remaining sand and polymer residue.

5. Let dry for 48 hours.

GO TO EAGLEBAYUSA.COM FOR FULL INSTALLATION INSTRUCTIONS



FREQUENTLY ASKED QUESTIONS:

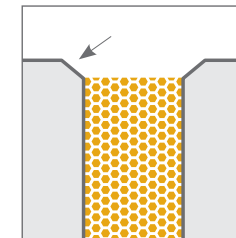
Q: WHAT IS THE BEST SAND TO USE?

A: There really is no "best" sand. Some sands are better suited for certain conditions and projects. Find out the job specifics and then see which sand makes the better fit.

Q: WHAT QUESTIONS SHOULD I ASK WHEN DETERMINING THE BEST FIT?

A: Will this area be constantly wet or shaded? Will the contractor be heavily sealing the area? Is the homeowner going to call me back if he or she sees cracks in the joint sand?

QUICK TIP: Joints must be filled up to the bottom of the pavers chamfer, or at least up to 1/8" below the top of the pavers.



Q: WILL I GET WHITISH SPOTS ON THE PAVERS AFTER INSTALLING THE SAND?

A: You must take precaution to make sure that all sand is either in the joints or removed from the surface of the pavers. Should a white residue appear, TECHNISEAL® Paver Restorer will remove it.

Q: WHAT COLORS ARE AVAILABLE FOR THE SAND?

A: The colors offered are granite and tan.



QUESTIONS? EAGLE BAY CUSTOMER SERVICE IS STANDING BY.



800-321-9141



DELIVERY@EAGLEBAYUSA.COM