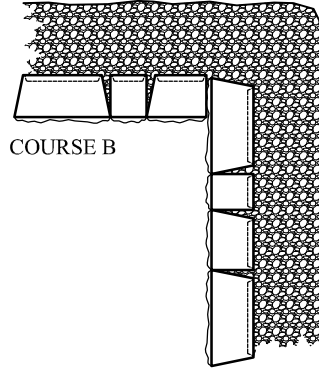


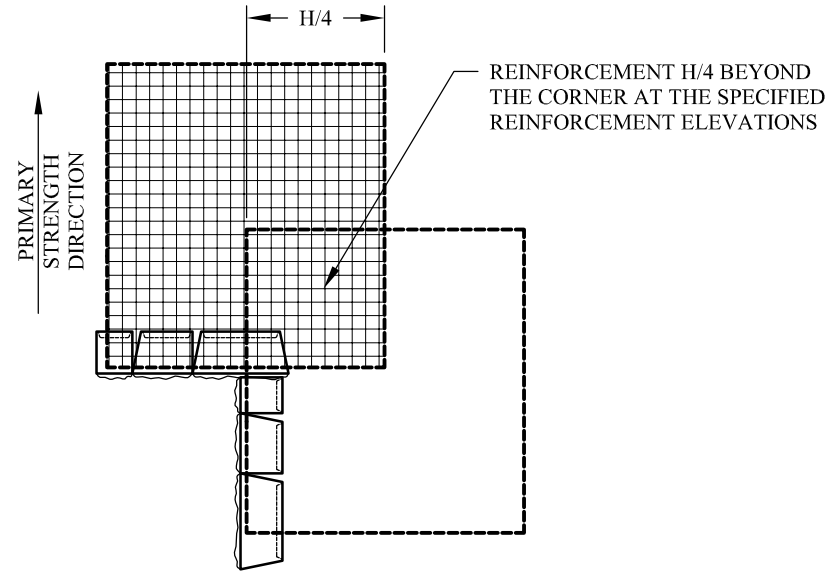
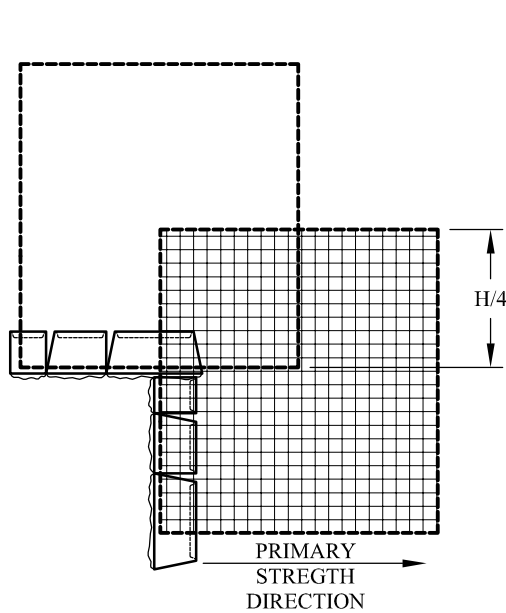
COURSE A



COURSE B

NOTES:

1. ALTERNATE COURSES A & B AS NEEDED UNTIL FULL HEIGHT OF WALL HAS BEEN REACHED
2. OCCASIONAL SAW-CUTTING OF UNITS WILL BE REQUIRED TO MAINTAIN PATTERN
3. H = FULL HEIGHT OF WALL



Anchor Wall Systems, Inc.
5959 Baker Road, Suite 390
Minnetonka, MN 55345

© 2013 Anchor Wall Systems, Inc.
® and ™ Anchor Wall Systems, Inc.

Drawn By:	SB
Date:	11/26/2013
Scale:	1/2"=1'-0"

Drawing Title:
**Brisa® 6" and Brisas® Random Retaining Wall Systems
90-Degree Inside Corner Details**

Typical Details For
Segmental Retaining Walls